
AD-62

—— CONTENTS ——

FIG.1 DUPLEX UNIT FOR FINISHER 2

FIG. 1 DUPLEX UNIT FOR FINISHER

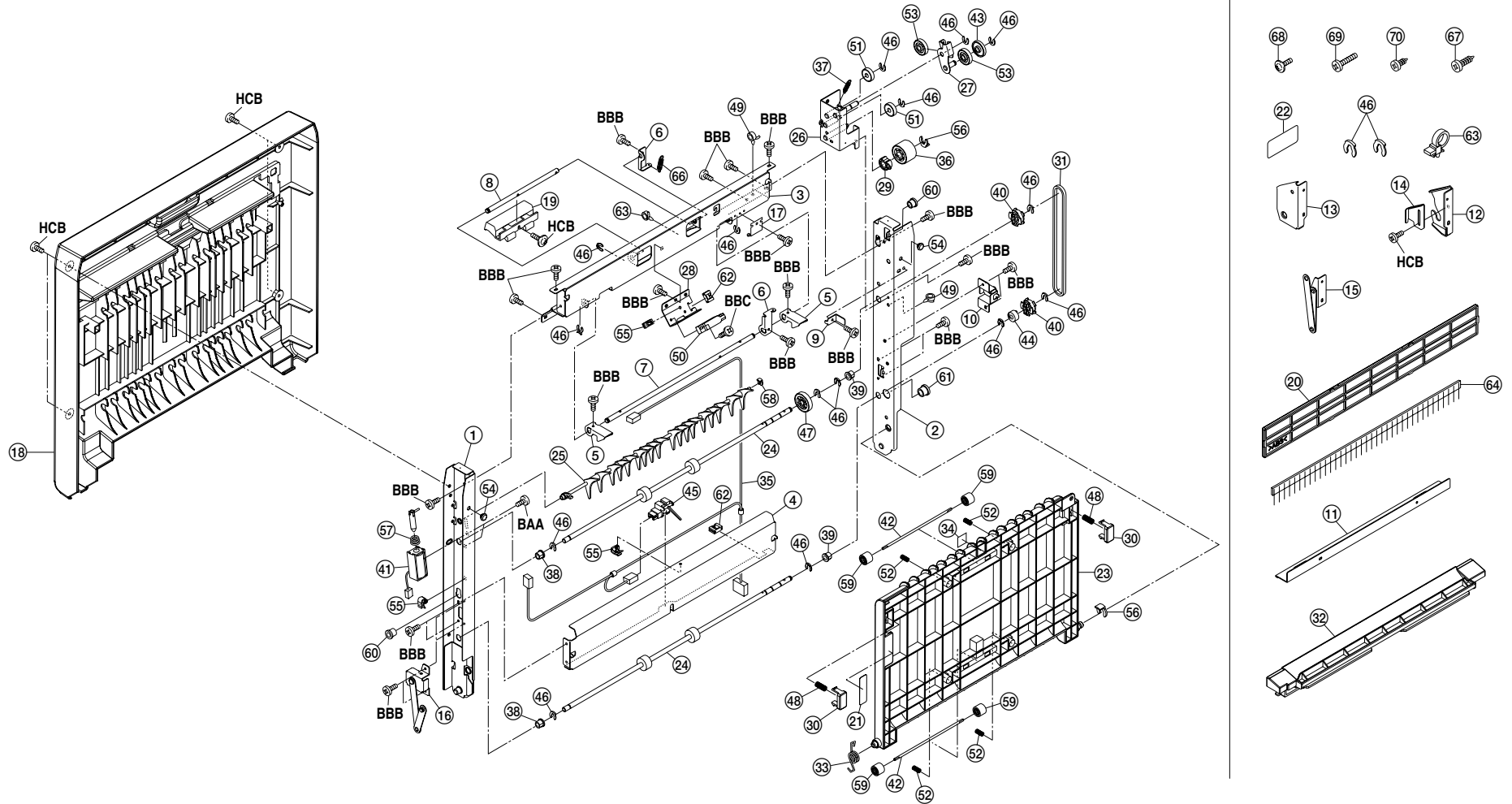


FIG. 1 DUPLEX UNIT FOR FINISHER

3A4

SP	Ref. No.	Part. No.	Description	Quantity		
				120V	230V	240V
	1	3A402010	FRONT FRAME	1	1	1
	2	3A402020	REAR FRAME	1	1	1
	3	3A402030	UPPER STAY	1	1	1
	4	3A402040	LOWER STAY	1	1	1
	5	3A402050	HOOK,DUPLEX	2	2	2
	6	3A402060	LEVER,HANDLE DUPLEX	2	2	2
	7	3A402070	SHAFT,HOOK DUPLEX	1	1	1
	8	3A402080	SHAFT,HANDLE DUPLEX	1	1	1
	9	3A402090	HOLDER,SAFETY SWITCH	1	1	1
	10	3A402100	RETAINER,STOPPER	1	1	1
	11	3A402110	JUNCTION PLATE,DUPLEX	1	1	1
	12	3A402120	FRONT FULCRUM PLATE,DUPLEX	1	1	1
	13	3A402130	REAR FULCRUM PLATE,DUPLEX	1	1	1
	14	3A402140	FRONT HOOK,FULCRUM	1	1	1
	15	3A402150	STOPPER,DUPLEX	1	1	1
	16	3A402160	FRONT STOPPER,DUPLEX	1	1	1
	17	3A402170	PLATE SPRING,GROUND	1	1	1
●	18	3A404010	COVER,DUPLEX	1	1	1
	19	3A404030	HANDLE,DUPLEX	1	1	1
●	20	3A404040	LEFT COVER,MACHINE	1	1	1
	21	3A405020	LABEL,HANDLE	1	1	1
	22	3A405030	LABEL,JAM REMOVAL	1	1	1
	23	3A416010	GUIDE,RELEASE	1	1	1
●	24	3A416020	ROLLER,DUPLEX	2	2	2
	25	3A416030	CLAW,DUPLEX	1	1	1
	26	3A416040	MOUNT DRIVE	1	1	1
	27	3A416050	MOUNT PLATE,JOINT DUPLEX	1	1	1
	28	3A416060	MOUNT PLATE,FEED SWITCH	1	1	1
	29	3A416070	COLLAR,JOINT FINISHER	1	1	1
	30	3A416080	PRESSING PLATE,GUIDE RELEASE	2	2	2
	31	3A416090	BELT,DUPLEX	1	1	1
	32	3A416100	GUIDE,FEED IN MACHINE	1	1	1
	33	3A416110	SPRING,GUIDE RELEASE	1	1	1
	34	3A416120	FILM,GUIDE RELEASE	1	1	1
	35	3A427011	WIRE,DUPLEX UNIT	1	1	1
	36	45728112	IDLE GEAR 25	1	1	1
	37	48528108	SPRING,JOINT	1	1	1
	38	29806560	BUSHING 6	2	2	2
	39	29806810	BUSHING,6 REGISTRATION	2	2	2
	40	3AK08230	PULLEY 20,COUPLING	2	2	2

SP	Ref. No.	Part. No.	Description	Quantity		
				120V	230V	240V
●	41	3AK27040	SOLENOID,PADDLE	1	1	1
	42	3A616070	SHAFT,EJECT PULLEY	2	2	2
	43	3A616090	COLLAR,JOINT DUPLEX	1	1	1
	44	3BC07130	ONE-WAY CLUTCH 6	1	1	1
●	45	33906340	SWITCH,FEED	1	1	1
	46	34806150	STOPPER 5	17	17	17
	47	36915350	GEAR 25,DEVELOPING	1	1	1
	48	65012550	SPRING,SHADING PRESSURE	2	2	2
	49	M2107120	BINDING BAND SG-130	2	2	2
●	50	66006360	PAPER SWITCH	1	1	1
	51	66006810	GEAR,16 BYPASS PULLEY	2	2	2
	52	68814720	SPRING B,DOCTOR BLADE	4	4	4
	53	72906350	GEAR 20,REGISTRATION IDLE	2	2	2
	54	73202040	RUBBER,SPACER	2	2	2
	55	M2109260	WIRE SADDLE,YMC-05-H-0(KITAGAWA)	3	3	3
	56	75706040	STOPPING PAPER FEED PULLEY	2	2	2
	57	77726130	SPRING,FEED SHIFT SOLENOID	1	1	1
	58	78620710	CLAW STOPPER	1	1	1
	59	78710050	PULLEY LOOP SECTION	4	4	4
	60	M1203200	OPEN BUSHING,OCB-375	2	2	2
	61	M1203240	OPEN BUSHING,OCB-500	1	1	1
	62	M2104350	EDGING,EDS-0607M(KITAGAWA)	2	2	2
	63	M2607010	BINDING BAND,PLT1M	2	2	2
	64	18393020	PARTS,STATIC ELIMINATOR EJECT(SP)	1	1	1
	65	65027470	CORE,7-15X18	1	1	1
	66	75607370	LEADING EDGE ARM SPRING	1	1	1
	67	B4144120	TRIPLE TAP-TITE P SCREW M4X12(CHROMIUM)	1	1	1
	68	B4103050	TRIPLE SCREW M3X05 (CHROMIUM)	1	1	1
	69	B1103140	BINDING SCREW VM3X14(CR)	7	7	7
	70	B4143080	+TP TRIPLE TAP-TITE P SCREW M3X08(CR)	1	1	1

- Parts with "●" are component parts or sub-assemblies of the assembly appearing immediately above them.
- Parts with "●" indicates the Service parts.